

# EXPLORER LED Bulkhead



## Features

The Explorers chromated polyester powdercoated aluminium enclosure combined with the high impact borosilicate glass lens make the Explorer a good choice for corrosive environments. The IP66 rating of the Explorer allows it to be used in areas where cleanliness is of importance as it can with high pressure cleaning and resistance from chemical cleaning agents.



IP66



IK08



-20°C



40°C

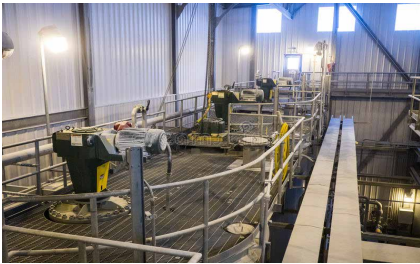


Class I



Emergency Option

## Typical Applications



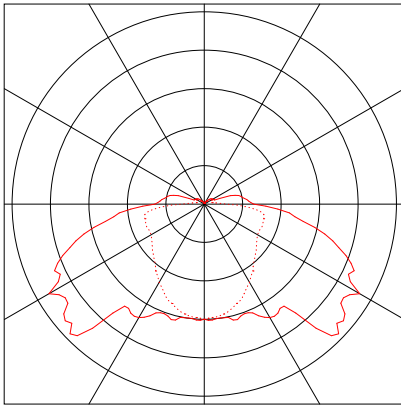
## Technical Specifications

Operating Voltage	90-240V AC 50/60Hz
Power Factor	≥0.9
EMC	AS/NZSCISPR15
Safety	AS/NZS60598.1, AS/NZS60598.2.1
Enclosure	Marine grade chromated and powdercoated aluminium
Optical Cover	Toughened borosilicate glass
Supply Connection	4mm <sup>2</sup> terminal block
Installation	Ceiling, wall and pole mounting
Entries	4 x M20 - two at each end
Efficacy	>100lm/W
CCT	2700K, 3000K, 4000K, 5000K
CRI	Ra>70
LED Life	L70 / B50 >50000 Hours



# EXPLORER LED Bulkhead

## Photometric Diagram



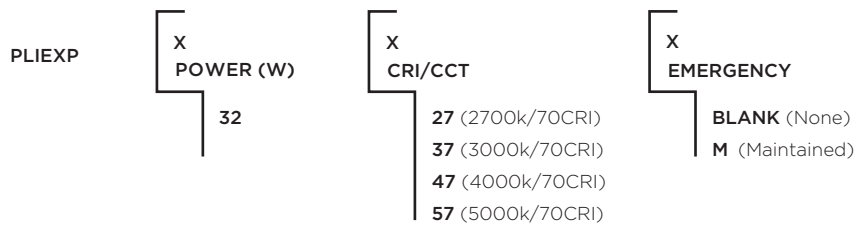
## Accessories

PLIEXPB	Ceiling / surface mount bracket
PLIEXP32	Pole mount bracket for 32nB pipe
PLIEXP40	Pole mount bracket for 40nB pipe

## Benefits

- Emergency Option
- High transmittance toughened optical glass
- Wide voltage range for industrial applications
- Surge protection to 10kV
- High temperature stability
- Chromate conversion and powdercoat finish for corrosive environments

## Ordering Methodology



MODEL No	POWER (W)	LUMINOUS FLUX (lm)	CCT (K)	DIMENSIONS (mm)	MASS (kg)
PLIEXP3247	32	3200	4000K	300 × 192 × 200	5.5

