

LED BATTENS WEATHERPROOF



**EAGLE**

# LED BATTENS WEATHERPROOF

## EAGLE

The polyester powder-coated aluminium enclosure combined with a high-impact polycarbonate diffuser makes the Eagle a good fit for corrosive atmospheres or where the risk of mechanical damage is possible. The IP66 rating of the Eagle allows it to be used in areas where cleanliness is of importance as it can withstand high-pressure cleaning and resistance from chemical cleaning agents. The diffuser is secured with stainless steel cap head screws making it suitable for areas where vandal resistance is required.



## TYPICAL APPLICATIONS



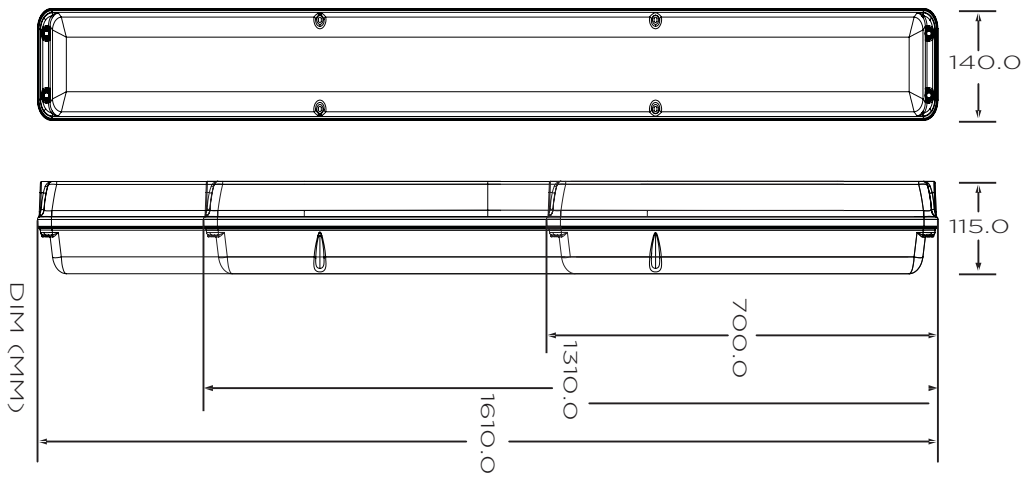
Mining, MIA (Mining Infrastructure Area), Coal, Open Cuts, Metalliferous, Iron Ore, Industrial, Processing Plants, Materials Handling, Lithium Processing, Power Generation, Energy & Utilities, Water & Waste Water, Ports, Wharfs & Waterways, Chemical & Processing

## SPECIFICATIONS

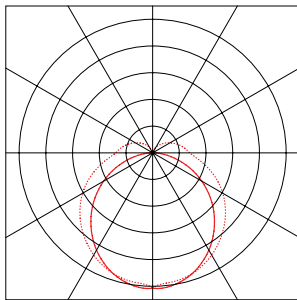
Model:	PLIEGL24	PLIEGL48	PLIEGL72
<b>Optical Characteristics</b>			
Rated Wattage	24W	48W	72W
Lumens	2568	5088	8208
System Efficacy	107Lm/W	106Lm/W	114Lm/W
Colour Temperature CCT	5000K (4000K / 3000K)		
CRI (Ra)	>80		
Reported L70	>50,000 Hours		
Lens Optic Type	120°		
<b>Electrical Characteristics</b>			
Input	90-240VAC (DC Available on Request)		
Frequency	50Hz		
Powerfactor	>0.95		
Total Harmonic Distortion	10%		
<b>Environment</b>			
IP Rating	IP66		
Impact Rating	IK08		
Operating Temperature	-30°C To 55°C		
<b>Product Material and Mounting</b>			
Option 1	Ceiling Mount		
Option 2	Wall Mount		
Option 3	Angled Wall Mount		
Option 4	Surface Mount		
Option 5	Pipe Clamp Mount 40mm or 50mm		
Product Material	Die-casting Aluminum		
Lens / Optics Material	Frosted PC Lens		
<b>Dimensions and Weights</b>			
Product Dimensions	700*140*115	1310*140*115	1610*140*115
Product Weight	2KG	3.5KG	4KG
Packaging Dimensions	725*300*390	1335*300*390	1665*300*270
Gross Weight	3.2KG	4.7 KG	5.4KG
<b>Warranty and Certifications</b>			
Warranty	5 Year Warranty		
Certifications	SAA / CE / RoHS		

# LED BATTENS WEATHERPROOF

## DIMENSIONS

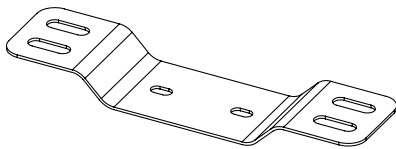


## PHOTOMETRIC DIAGRAMS

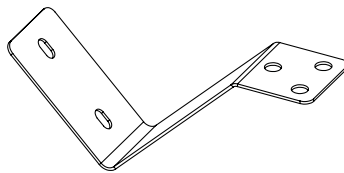


120°

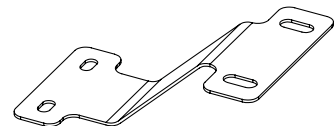
## ACCESSORIES



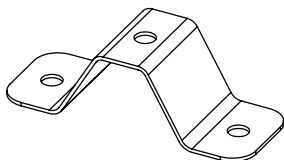
Ceiling Mount Bracket



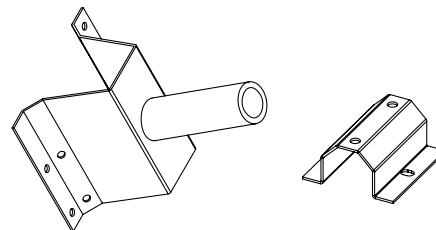
Angled Wall Mount Bracket



Surface Mount Bracket



Pipe Clamp Kit  
(40mm OD Pipe)  
(50mm OD Pipe)



Wall Mount Bracket Kit

# LED BATTENS WEATHERPROOF

## ORDERING METHODOLOGY

PLI-EGL	XX WATTS	XX CCT	XX FUNCTION
	24W 48W 72W	50 (5000K) 40 (4000K) 30 (3000K)	ST (STANDARD) EM (EMERGENCY)

## ACCESSORIES

CEILING MOUNT BRACKET	PLIEGL/CM
WALL MOUNT BRACKET	PLIEGL/WM
ANGLED WALL MOUNT BRACKET	PLIEGL/AM
SURFACE MOUNT BRACKET	PLIEGL/SM
PIPE CLAMP KIT 40MM OD POLE	PLIEGL/PCL40
PIPE CLAMP KIT 50MM OD POLE	PLIEGL/PCL50

