

TUNNEL/CONVEYOR/PLANT LIGHTS



ILLUMINATOR EXTREME

ILLUMINATOR EXTREME

The Illuminator Extreme is the newest addition to the Phoenix EMS Industrial Lighting family. It is manufactured in 316 Stainless Steel and designed to push the light further than ever before with 15 Meter spacing across conveyor walkway and platform lighting.

The Illuminator Extreme reduces the number of light fittings by the use of superior optics and technology to reduce capital costs and provides a fitting that operates reliably in dusty, dry & hot Australian mining conditions.



TYPICAL APPLICATIONS

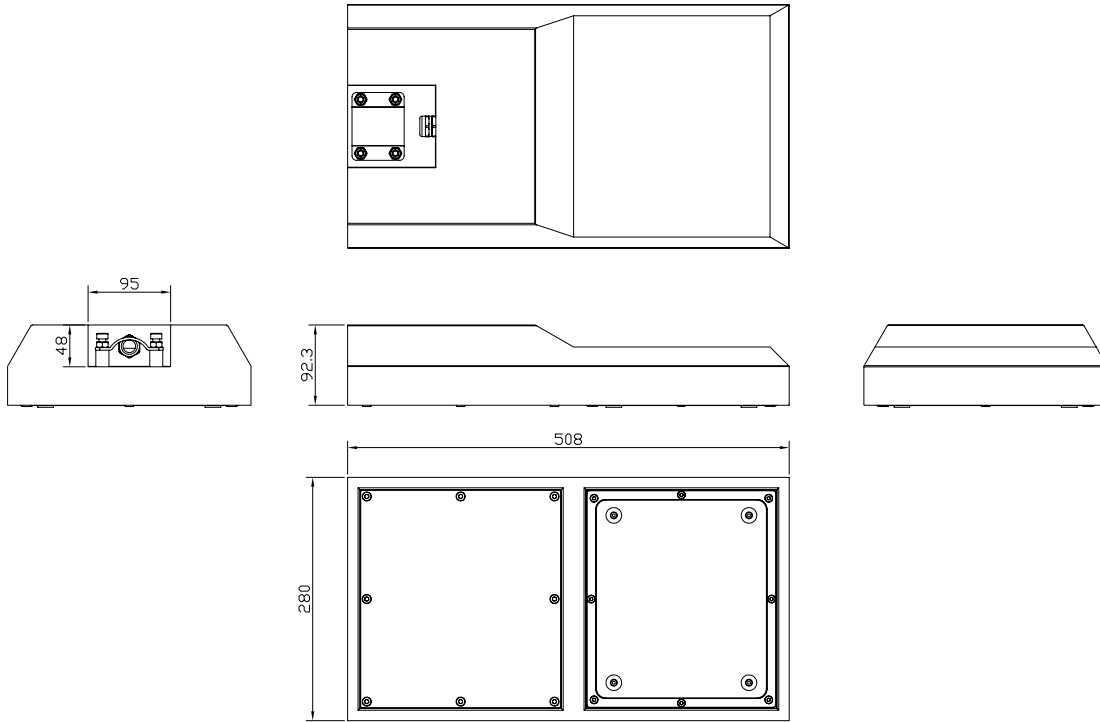


Mining, MIA (Mining Infrastructure Area), Coal, Open Cuts, Metalliferous, Iron Ore, Industrial, Processing Plants, Materials Handling, Lithium Processing, Power Generation, Energy & Utilities, Water & Waste Water, Ports, Wharves & Waterways, Chemical & Processing, Ports & Wharves, Airports, Car Parks, General Area Lighting, Container Terminals

SPECIFICATIONS

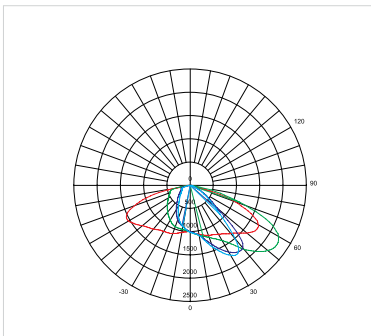
Model	PLIX20	PLIX30	PLIX40	PLIX50	PLIX60	PLIX37DC
Optical Characteristics						
Rated Wattage	20W	30W	40W	50W	60W	37W
Lumens	3140	4710	6280	7850	9420	5809
System Efficacy	157Lm/W					
Colour Temperature CCT	3CCT (2200K Amber Turtle Friendly / Green Eyewash)					
CRI (Ra)	>70					
Reported L70	>50,000 Hours					
Lens Optic Type	Type II /Type V					
Electrical Characteristics						
Input	90-305VAC					24VDC
Frequency	50Hz (Optional 60Hz)					N/A
Powerfactor	>0.95 / 230VAC					<0.9
Total Harmonic Distortion	<15%					N/A
Environment						
IP Rating	IP66					
Impact Rating	IK08 (Optional IK09)					
Operating Temperature	-40°C To 50°C (0°C To 50°C Emergency Battery)					
Product Material and Mounting						
Option 1	Spigot Mount					
Option 2	U Bracket/Trunnion Mount					
Option 3	Stirrup Mount For Ceiling/Wall					
Product Material	Powder-coated 316 Stainless Steel					
Lens / Optics Material	PC Lens					
Dimensions and Weights						
Product Dimensions	508*280*92.3					
Product Weight	7.5KG					
Packaging Dimensions	690*335*170					
Gross Weight	8.5KG					
Warranty and Certifications						
Warranty	5 Years Warranty					
Certifications	SAA / EMC					

DIMENSIONS

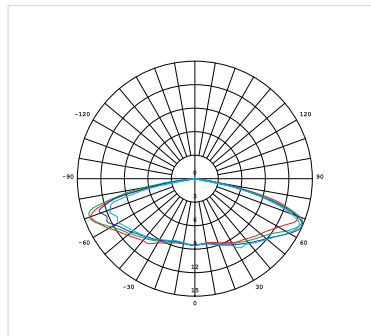


PHOTOMETRIC DIAGRAMS

TYPE II

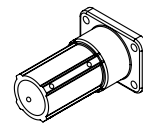
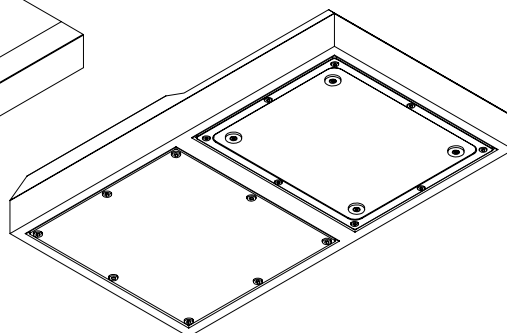
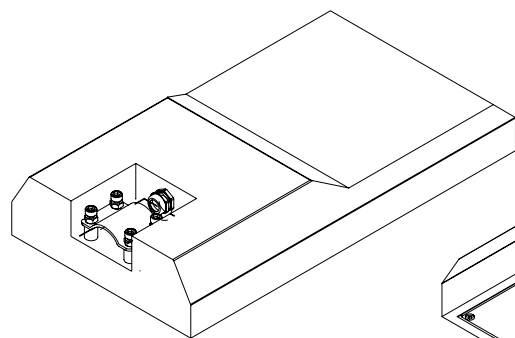


TYPE V

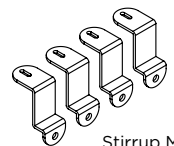


**TYPE I, III, IV available upon request

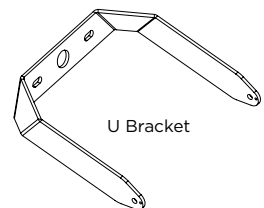
MOUNTING OPTIONS



Spigot Mount

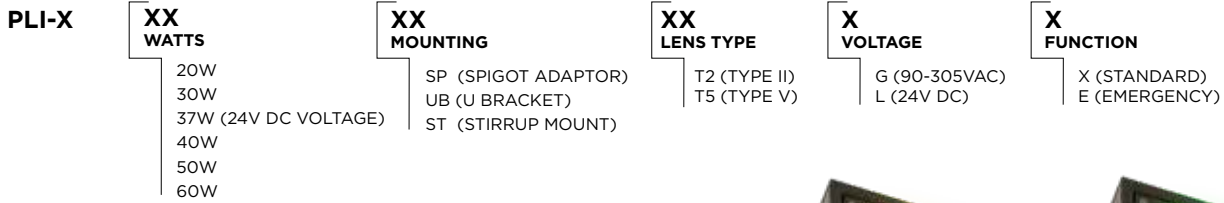


Stirrup Mount



U Bracket

ORDERING METHODOLOGY



ACCESSORIES

- | | |
|---|-----------|
| SPIGOT ADAPTOR | PLIX/SP |
| U BRACKET | PLIX/UB |
| STIRRUP MOUNT | PLIX/ST |
| CORROSION PROTECTION COATING | PLIX/PC |
| DAY/NIGHT SENSOR | PLIX/DN |
| MOTION SENSOR (INDOOR UP TO 12 METRES) | PLIX/MSID |
| MOTION SENSOR (OUTDOOR UP TO 12 METRES) | PLIX/MSOD |
| AMBER TURTLE FRIENDLY 2200K | PLIX/A |
| GREEN EYEWASH | PLIX/G |
| NEMA 7 PIN SMART CELL | PLIX/NEMA |



Amber Turtle Friendly



Green Eyewash

SMART TECHNOLOGY

The Illuminator is Smart Technology ready and can be provided with a NEMA 7 Pin Smart Cell.

SPACINGS

50W-5000K-Type II Optics Model
 Mounting Height: 3.0m
 Maintenance Factor: 0.7
 Walkway Width: 1.0m

