

CONVEYOR & BULKHEAD LIGHTS



ILLUMINATOR

CONVEYOR & BULKHEAD LIGHTS

ILLUMINATOR

The Illuminator is the newest addition to the Phoenix EMS industrial lighting family and is designed to push the light further than ever before with 15 Meter spacing across Conveyor, Walkway and Platform Lighting.

The Illuminator reduces the number of light fittings through the use of superior optics and technology to reduce capital costs and provides a fitting that operates reliably in dusty, dry & hot Australian mining conditions.



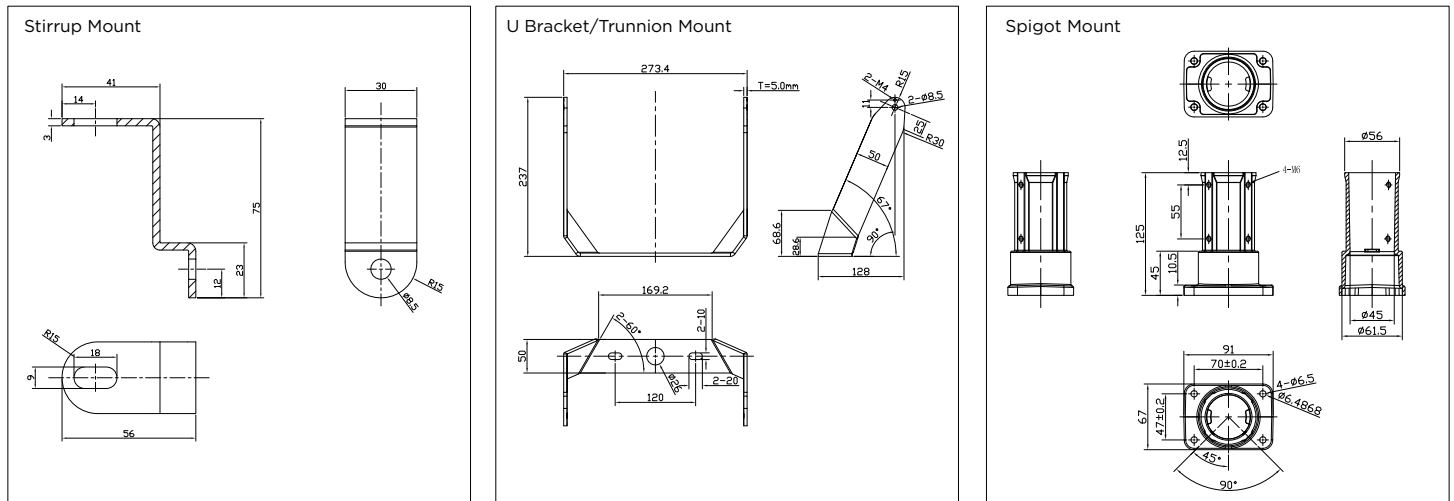
TYPICAL APPLICATIONS



Coal & Metalliferous Mine Process Plants, Quarries, Campsite Area Lighting, General Area Lighting Car Parks, Conveyors, Pedestrian Access Road Ways, Stacker/Reclaimers, Stairwells, Tunnels, Walkways Bulkheads.

SPECIFICATIONS

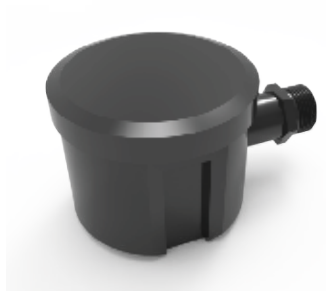
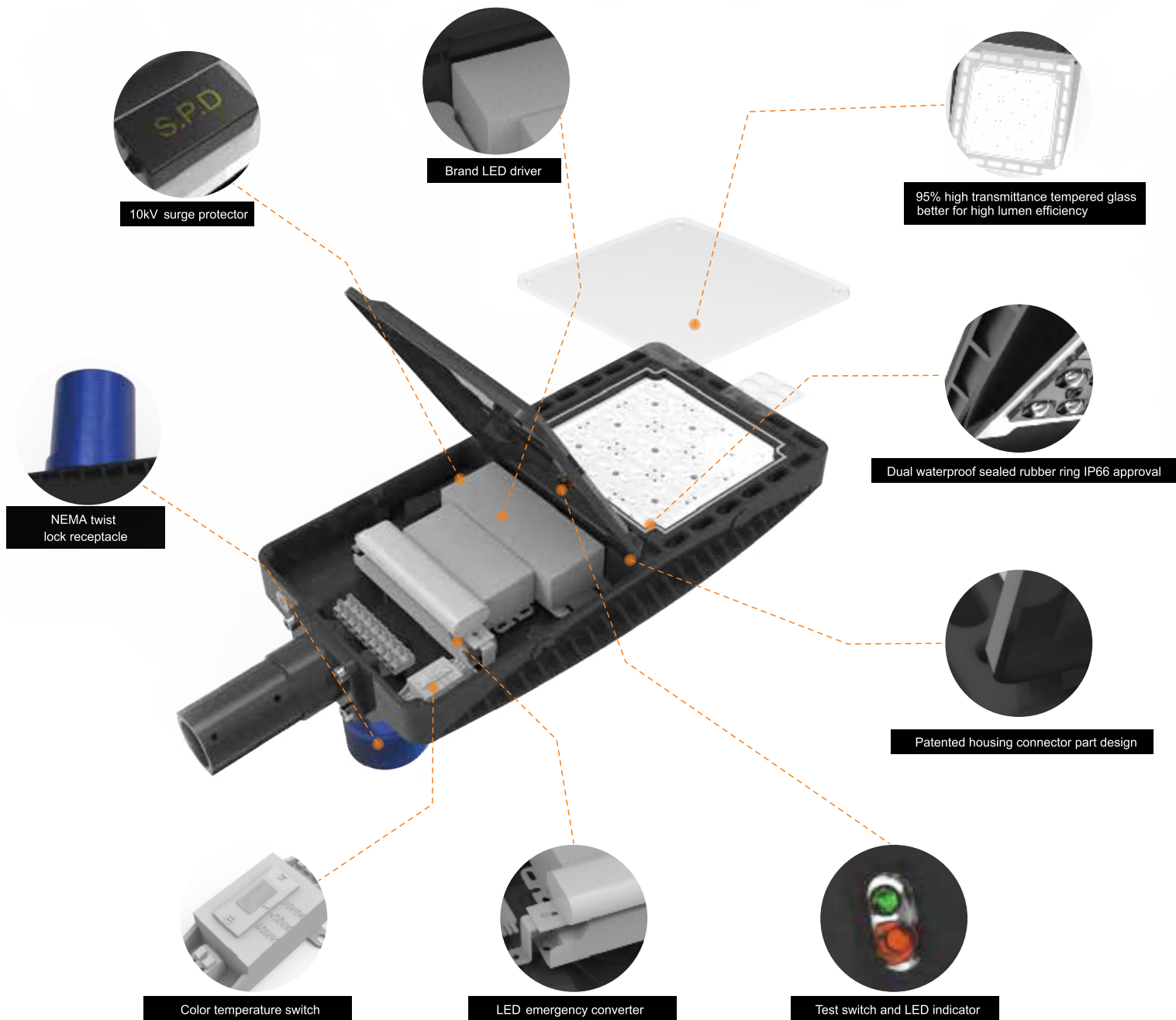
Model	PLI20	PLI30	PLI40	PLI50	PLI60	PLI37DC
Optical Characteristics						
Rated Wattage	20W	30W	40W	50W	60W	37W
Lumens	3140	4710	6280	7850	9420	5809
System Efficacy	157Lm/W @ 4000K					
Colour Temperature CCT	3CCT (2200K Amber Turtle Friendly / Green Eyewash)					
CRI (Ra)	>70					
Reported L70	>50,000 Hours					
Lens Optic Type	Type II / Type V					
Electrical Characteristics						
Input	90-305VAC					24VDC
Frequency	50Hz					N/A
Powerfactor	>0.95 / 230VAC					<0.9
Total Harmonic Distortion	<15%					N/A
Environment						
IP Rating	IP66					
Impact Rating	IK08 (Optional IK09)					
Operating Temperature	-40°C To 50°C (0°C To 50°C Emergency Battery)					
Product Material and Mounting						
Option 1	Spigot Mount					
Option 2	U Bracket/Trunnion Mount					
Option 3	Stirrup Mount For Ceiling/Wall					
Product Material	Die Casting Aluminium					
Lens / Optics Material	Tempered Glass (PC Lens Optional)					
Dimensions and Weights						
Product Dimensions	479*268*92					
Product Weight	7.5KG					
Packaging Dimensions	690*335*170					
Gross Weight	8.5KG					
Warranty and Certifications						
Warranty	5 Year Warranty					
Certifications	SAA / EMC					

[illegible]

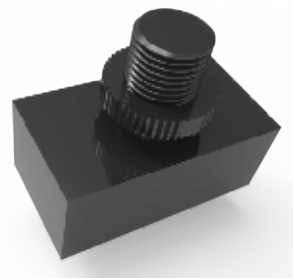
TYPE II

TYPE V

BULKHEAD MINING FITTING STRUCTURE CHART



Motion Sensor (Optional)



Daylight Sensor (Optional)

ORDERING METHODOLOGY

PLI	XX WATTS	XX MOUNTING	XX LENS TYPE	X VOLTAGE	XX FUNCTION
	20W	SP (SPIGOT ADAPTOR)	T2 (TYPE II)	G (90-305VAC)	X (STANDARD)
	30W		T5 (TYPE V)	L (24V DC)	E (EMERGENCY)
	37W (24V DC VOLTAGE)	UB (U BRACKET)			
	40W	ST (STIRRUP MOUNT)			
	50W				
	60W				

ACCESSORIES/CONTROLS

SPIGOT ADAPTOR
U BRACKET
STIRRUP MOUNT
CORROSION PROTECTION COATING
AMBER TURTLE FRIENDLY 2200K
GREEN EYEWASH
DAY/NIGHT SENSOR
MOTION SENSOR (INDOOR UP TO 12 METRES)
MOTION SENSOR (OUTDOOR UP TO 12 METRES)
NEMA 7 PIN SMART CELL

PLI/SP
PLI/UB
PLI/ST
PLI/PC
PLI/A
PLI/G
PLI/DN
PLI/MSID
PLI/MSOD
PLI/NEMA



Green Eyewash Available

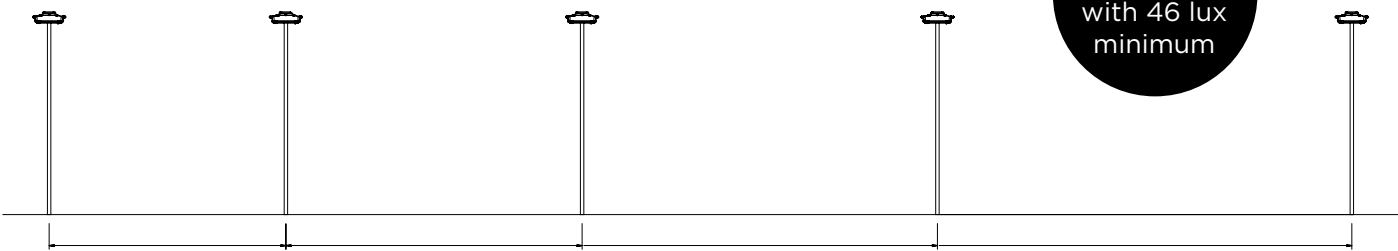
2200K Amber
Turtle Friendly Available

SMART TECHNOLOGY

The Illuminator is Smart Technology ready and can be provided with a NEMA 7 Pin Smart Cell.

SPACINGS

50W-5000K-Type II Optics Model
Mounting Height: 3.0m
Maintenance Factor: 0.7
Walkway Width: 1.0m



Up to 15m
spacing
with 46 lux
minimum

Spacing: 8 Meters
Ave = 173 lux
Min = 135 lux
Min/Ave = 0.78

Spacing: 10 Meters
Ave = 139 lux
Min = 111 lux
Min/Ave = 0.8

Spacing: 12 Meters
Ave = 115 lux
Min = 82 lux
Min/Ave = 0.71

Spacing: 15 Metres
Ave = 92 lux
Min = 46 lux
Min/Ave = 0.5

MOUNTING OPTIONS

