

TUNNEL/CONVEYOR/PLANT LIGHTS



**PHOENIX
MASTER**

PHOENIX MASTER

The Phoenix Master is a brand-new state of the art competitive universal solution for Tunnels, Conveyor & Plant lighting applications. The patented design appearance enables the lamp to have a self-cleaning function to avoid dust collection and its double anti-thunder technology allows the fixture to operate smoothly in extreme conditions. The Phoenix Master also features a built-in 3CCT colour temperature adjustment or the choice of 2200K Amber Turtle Friendly and Green Eyewash.



TYPICAL APPLICATIONS



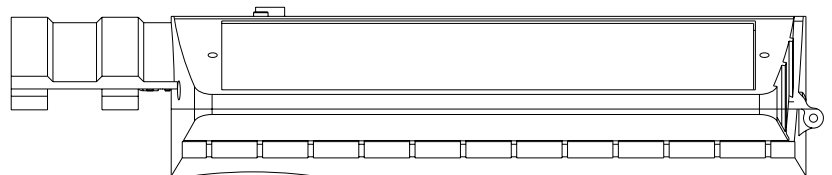
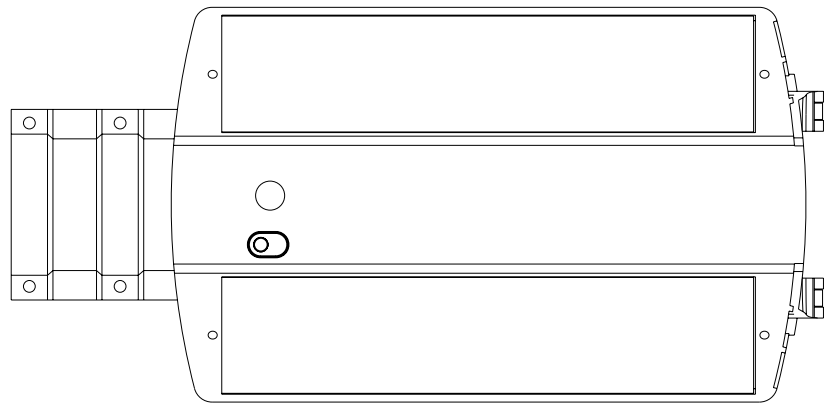
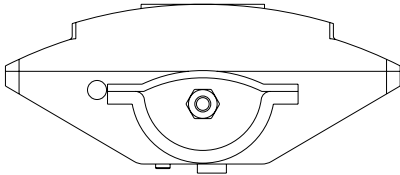
Mining, MIA (Mining Infrastructure Area), Coal, Open Cuts, Metalliferous, Iron Ore, Industrial, Processing Plants, Materials Handling, Lithium Processing, Power Generation, Energy & Utilities, Water & Waste Water, Ports, Wharfs & Waterways, Chemical & Processing, Ports & Wharves, Airports, Car Parks, General Area Lighting, Container Terminals

SPECIFICATIONS

| Model | PLIPHXM50 | PLIPHXM70 |
|-------------------------------|--|-----------|
| Optical Characteristics | | |
| Rated Wattage | 50W | 70W |
| Lumens | 6750 | 9450 |
| System Efficacy | 135Lm/W | |
| Colour Temperature CCT | 3CCT (2200K Amber Turtle Friendly / Green Eyewash) | |
| CRI (Ra) | >70 | |
| Reported L70 | >50,000 Hours | |
| Lens Optic Type | Type II / Type V | |
| Electrical Characteristics | | |
| Input | 100-240AC | |
| Frequency | 50/60Hz | |
| Power Factor | >0.95 / 230VAC | |
| Total Harmonic Distortion | <15% | |
| Environment | | |
| IP Rating | IP66 | |
| Impact Rating | IK08 | |
| Operating Temperature | -40°C To 50°C (0°C To 50°C w Emergency Battery) | |
| Product Material and Mounting | | |
| Option 1 | Spigot Mount | |
| Option 2 | Trunnion Mount | |
| Option 3 | Stirrup Mount | |
| Product Material | Die Cast Aluminum | |
| Lens / Optics Material | Tempered Glass Lens | |
| Dimensions and Weights | | |
| Product Dimensions | 420*250*96 | |
| Product Weight | 5.5KG | |
| Packing Dimensions | 501*219*78 | |
| Gross Weight | 6.5KG | |
| Warranty and Certifications | | |
| Warranty | 5 Year Warranty | |
| Certifications | SAA | |

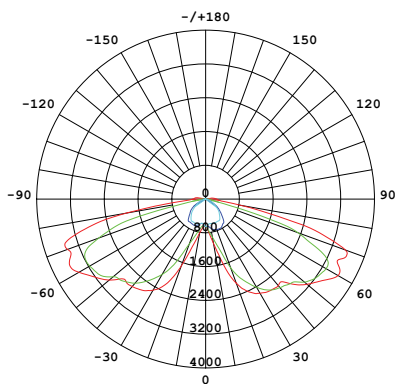
DIMENSIONS

420*250*96

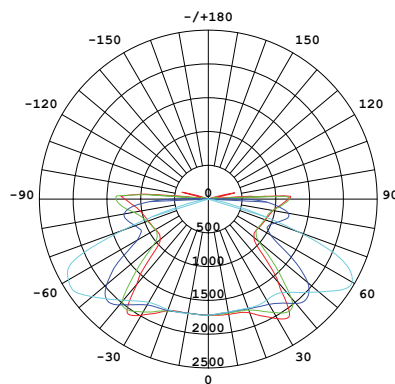


PHOTOMETRIC DIAGRAMS

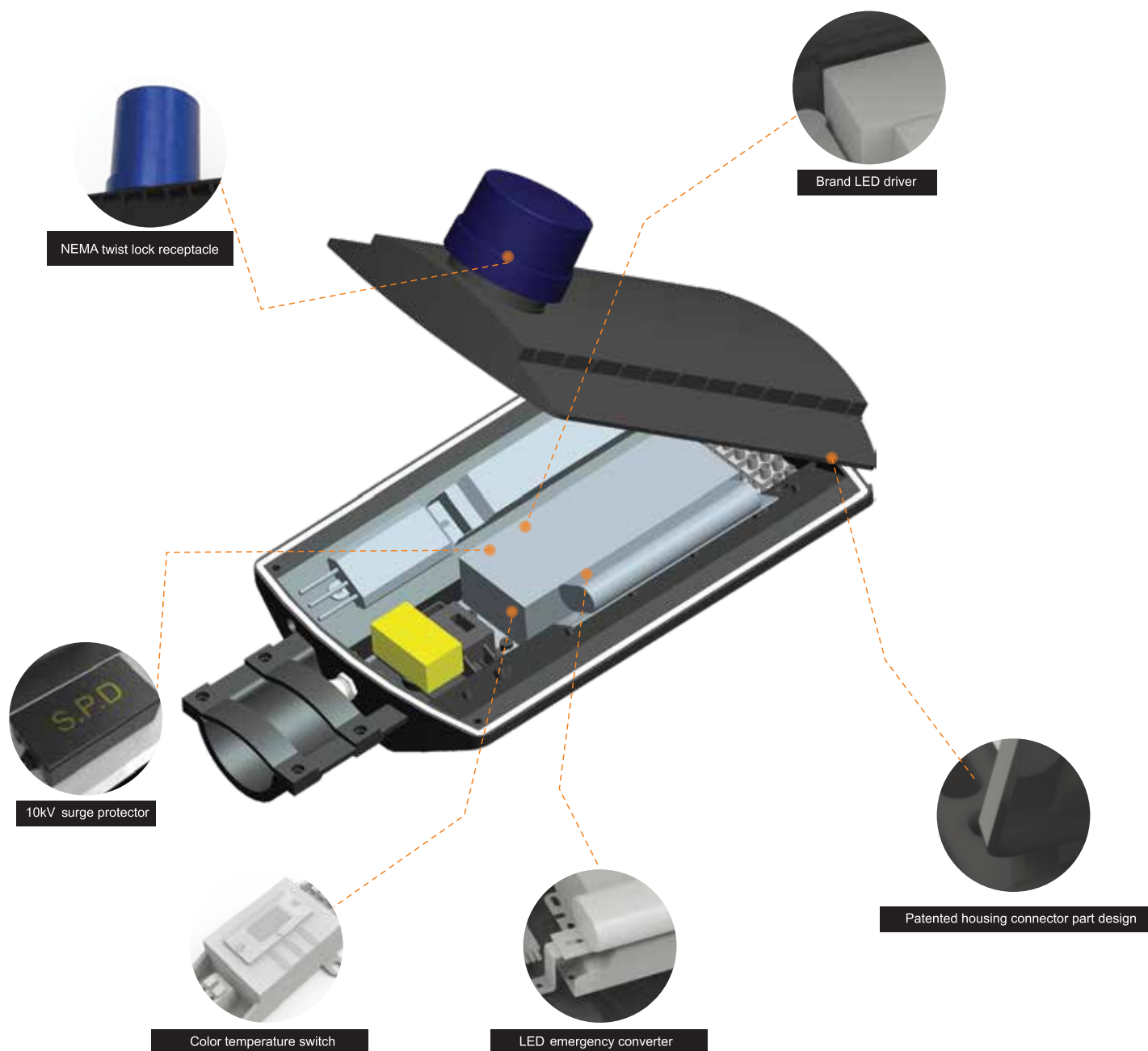
TYPE II



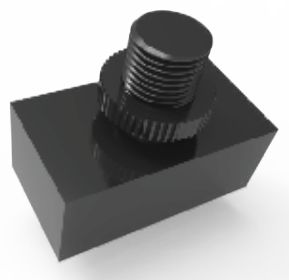
TYPE V



BULKHEAD MINING FITTING STRUCTURE CHART



Motion Sensor (Optional)



Daylight Sensor (Optional)

TUNNEL/CONVEYOR/PLANT LIGHTS



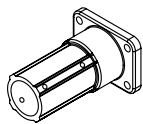
ORDERING METHODOLOGY

| PLI-PHXM | XX WATTS | X CCT | XX LENS TYPE | XX FUNCTION | X CONTROLS | XX MOUNTING |
|----------|-------------|---|-----------------------------|---------------------------------|--|--|
| | 50W 70W | 3 (3CCT) A (2200K AMBER TURTLE FRIENDLY) G (GREEN) | T2 (TYPE II) T5 (TYPE V) | ST (STANDARD) EM (EMERGENCY) | X (NONE) P (PHOTO SENSOR) M (MOTION SENSOR) D (DAYLIGHT SENSOR) R (RS485 DIMMER) | SP (SPIGOT) ST (STIRRUP) TM (TRUNNION MOUNT) |

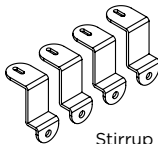
ACCESSORIES

| | |
|-----------------|-------------|
| SPIGOT ADAPTOR | PLIPHXM/SP |
| STIRRUP MOUNT | PLIPHXM/ST |
| TRUNNION MOUNT | PLIPHXM/TM |
| PHOTO SENSOR | PLIPHXM/P |
| MOTION SENSOR | PLIPHXM/M |
| DAYLIGHT SENSOR | PLIPHXM/D |
| RS485 DIMMER | PLIPHXM/R |
| NEMA RECEPTACLE | PLIPHXM/N |
| VISOR | PLIPHXM/VIS |

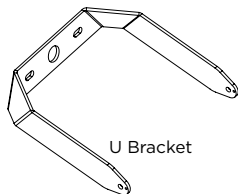
MOUNTING OPTIONS



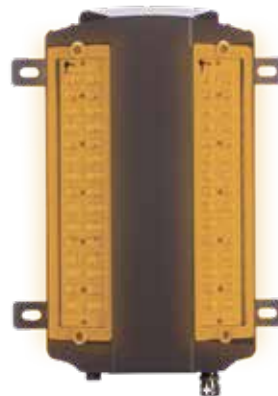
Spigot Mount



Stirrup Mount



U Bracket



Amber Turtle Friendly Available



Green Eyewash Available

